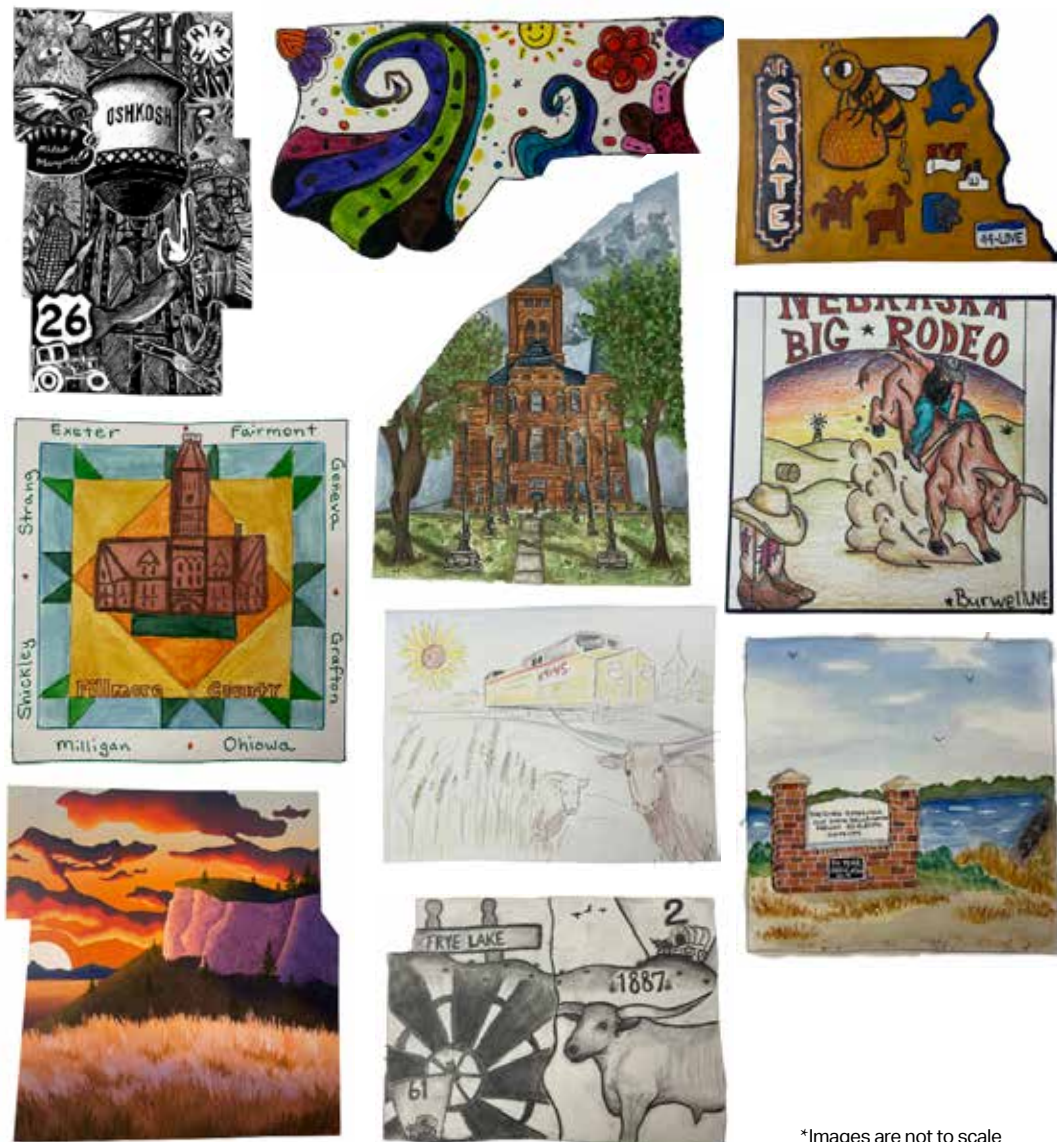


# PUTTING SCHOOLS ON THE MAP

We're thrilled to announce our new and exciting project: a one-of-a-kind map of Nebraska that will showcase the creativity and talent of 93 schools across the state!

We invited schools in each county in Nebraska to participate in a unique endeavor. Each school was asked to create their own original artwork on a watercolor paper cutout of their respective county. When all the pieces are completed, they will come together to create a map of Nebraska, which will be displayed in the Museum.

Can you guess what counties these are?



\*Images are not to scale

MUSEUM OF NEBRASKA ART  
2401 Central Avenue  
Kearney, NE 68847

Nonprofit  
U.S. Postage  
PAID  
Midwest  
Connect



Front image (detail): Eddie Dominguez, *Tell of Two Mountains*, 2024, ceramic, oil paint, glaze. Museum purchase made possible by the Cliff Art Endowment, and Julie Morsman Schroeder Foundation



**MUSEUM**  
news  
SPRING/SUMMER 2024



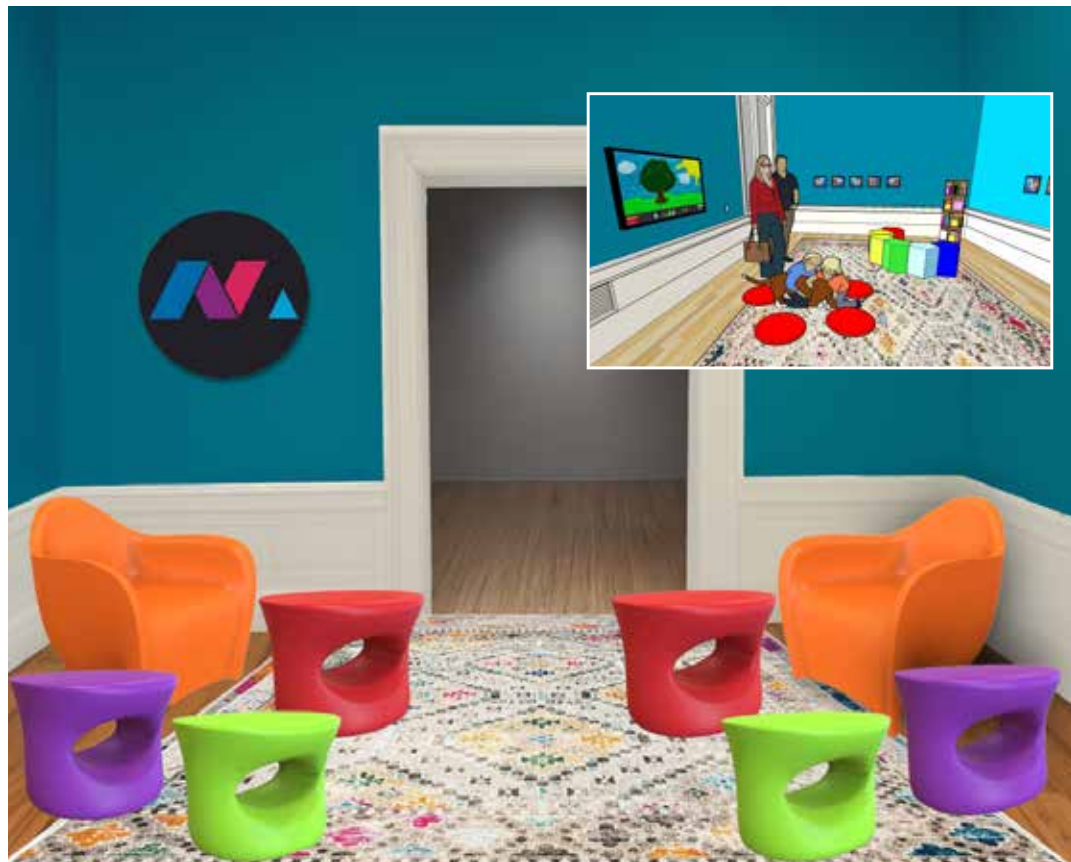


## CONSTRUCTION UPDATES

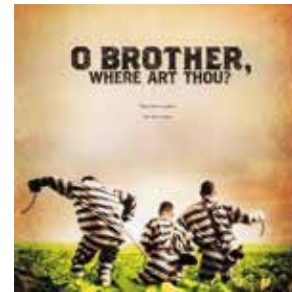
The former Postmaster Interactive Gallery is getting a bit of an update! Located in the historic building, this color filled space, provides a safe and welcoming environment for learners of all abilities to engage and explore art related topics.

A Masterpiece Painting Station will offer a safe, non-toxic experience allowing guests to experiment with different mediums and brush sizes without the mess or cost of traditional art supplies. Additionally, the board can be shared among multiple visitors, promoting collaboration and socialization. Parents and teachers can use the board as a tool for educational activities, helping children develop important skills such as hand-eye coordination and fine motor skills.

The redesigned space will provide a range of activities that promote reflection, innovation, and serenity. Alongside books and felt boards, visitors can engage in a variety of “quiet activities.” The gallery space also aims to promote inclusivity by offering book choices and activities in different languages and skill levels. Overall, the space is designed to create a safe and comfortable environment where guests can learn, explore, and play at their own pace. Free from any barriers, the gallery promotes accessibility, diversity, and inclusivity in the art world, while nurturing the next generation of artists and all art enthusiasts.



## UPCOMING CLASSES & EVENTS!



**BEYOND THE LENS – “O Brother Where Art Thou?”**  
**Thursday, July 11, 2024 | FREE & Open to the public**  
**Special Presentation, 6:30 p.m. | Movie, 7:00 p.m.**  
**The World Theatre | 2318 Central Ave, Kearney, NE**

*O Brother Where Art Thou?* deals with the picaresque adventures of Ulysses Everett McGill and his companions Delmar and Pete in 1930s Mississippi. Sprung from a chain gang and trying to reach Everett’s home to recover the buried loot of a bank heist they are confronted by a series of strange characters.

*Through the Beyond the Lens series, in partnership with The World Theatre, MONA presents a selection of films with cultural, aesthetic, or historical significance.*

**Special Presentation by Dr. Nathan Tye | 6:30 -7:00 p.m.**  
**Finding Art in Hard Times: New Deal Echoes in Kearney**

Dr. Nathan Tye, assistant professor of history at the University of Nebraska at Kearney, walks us through President Franklin D. Roosevelt’s New Deal programs. Often referred to as the “alphabet soup” due to their numerous acronyms, these programs aimed to provide relief, recovery, and reform during the Great Depression. One of these programs, the Works Progress Administration (WPA) Federal Art Project, played a crucial role in supporting artists across the country, some of whom are part of the Museum’s permanent collection.



**ART on Tap**  
 Join MONA for a fun evening and “tap” into the creative fusion of art and beer while unleashing your inner artist using this unique medium.

**Saturday, July 13, 2024 | 2:00-4:00 p.m.**  
**Divots Brewery | 4300 W Norfolk Ave | Norfolk, NE**  
 Cost \$45 per person. Payment due upon registration.  
 All participants must be 21 or older. All supplies are provided.

**Register online at [mona.unk.edu](http://mona.unk.edu) or contact the Museum at 308-865-8559**

### COMMUNITY CRANE PROJECT

In Japanese folklore, the crane is a strong majestic bird that is said to live for a thousand years, symbolizing honor, good fortune, loyalty, and longevity. These characteristics give the crane special meaning and are why the Japanese believe that anyone with the patience and commitment to fold 1,000 origami cranes will be given good fortune, peace, and granted a wish.



In celebration of MONA’s re-opening, we will be installing a Community Crane Project with 1,000 cranes filled with wishes in the Postmaster Interactive Gallery. If you would like to help fold, stop by our temporary office at 4111 4th Ave Ste. 50, Kearney to pick up a pack of supplies to do at your leisure.

## CURATORIAL SPOTLIGHT

**CHILDE HASSAM (1859-1935)**  
**Recent Acquisition**

American painter Childe Hassam (1859-1935) played a significant role in the development of Impressionism in the United States during the late nineteenth century. Lacking formal training, Hassam combined draftsmanship skills learned under commercial engraver Thomas George Johnson (1843-1904) with loose brushstrokes and soft colors developed while living in Paris from 1886 to 1889. He became best known for his scenes of bustling urban life and plein-air visions of nature.



Childe Hassam, *Northbend, Nebraska - September 14, 1908*, 1908, watercolor, gouache on paper, Museum purchase made possible by the Julie Morsman Schroeder Foundation

North Bend, Nebraska, September 14, 1908 is the only known work Hassam created of a Nebraska scene. This small watercolor was painted on the back page of a Farmers’ Almanac, likely while traveling from the East Coast to Oregon via train for a camping and outdoor painting trip with his friend and amateur artist Colonel Charles Erskine Scott Wood (1852-1944).

## BECOME A MONA DOCENT!



The Docent team at MONA plays a crucial role in the Museum’s education program, providing vital introductions and deeper insights into the exhibitions for tour groups of various ages. As a MONA Docent volunteer, you’ll enjoy enriching experiences working with the public, benefit from special training sessions and lectures by artists, art professionals, and community leaders, have opportunities to engage with special educational projects, and broaden your understanding of art. Docents guide both K-12 student groups and adults through the Museum’s permanent collection and exhibitions. You’ll receive

comprehensive training to conduct tours effectively, enhancing your knowledge about art and the museum’s collection. Ideal candidates should enjoy interacting with people from all age groups and have availability during weekdays to conduct tours.

### Upcoming Events and Training:

July – Plein air painting training and experience  
 August – *Nebraska Now* discussion and outreach training  
 September – Topic: What does each type of paint do?